

NHS commissioners working across South and  
Mid Yorkshire, Bassetlaw and North Derbyshire



Excellent  
healthcare  
together



NHS commissioners working across South and  
Mid Yorkshire, Bassetlaw and North Derbyshire



# Will Cleary-Gray

Commissioners Working Together  
Programme Director



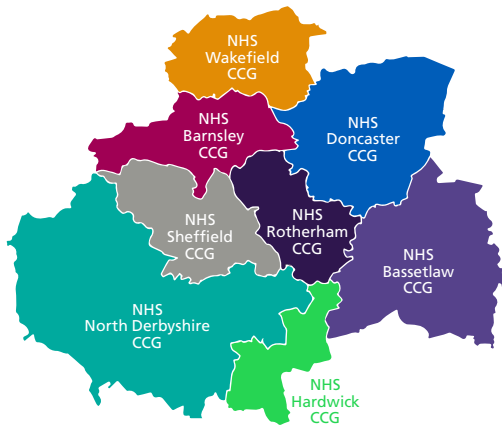
- **Who we are**
- **Our work with Macmillan and LWABC**
- **How does LWABC fit into the South Yorkshire and Bassetlaw STP?**





## We're aiming to develop excellent healthcare together by:

- Reconsidering how services are delivered
- Redefining how we work together as commissioners
- Coming together with partners to find the best solutions for our populations.



# Our core workstreams



URGENT AND  
EMERGENCY  
CARE

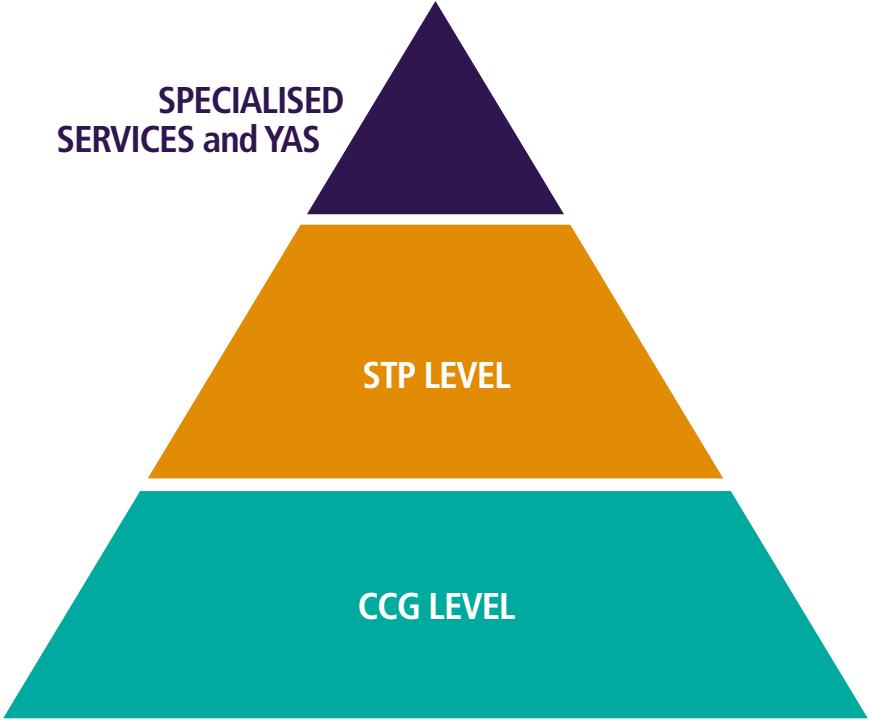
CHILDREN'S  
SURGERY AND  
ANAESTHESIA

LIVING WITH  
AND BEYOND  
CANCER

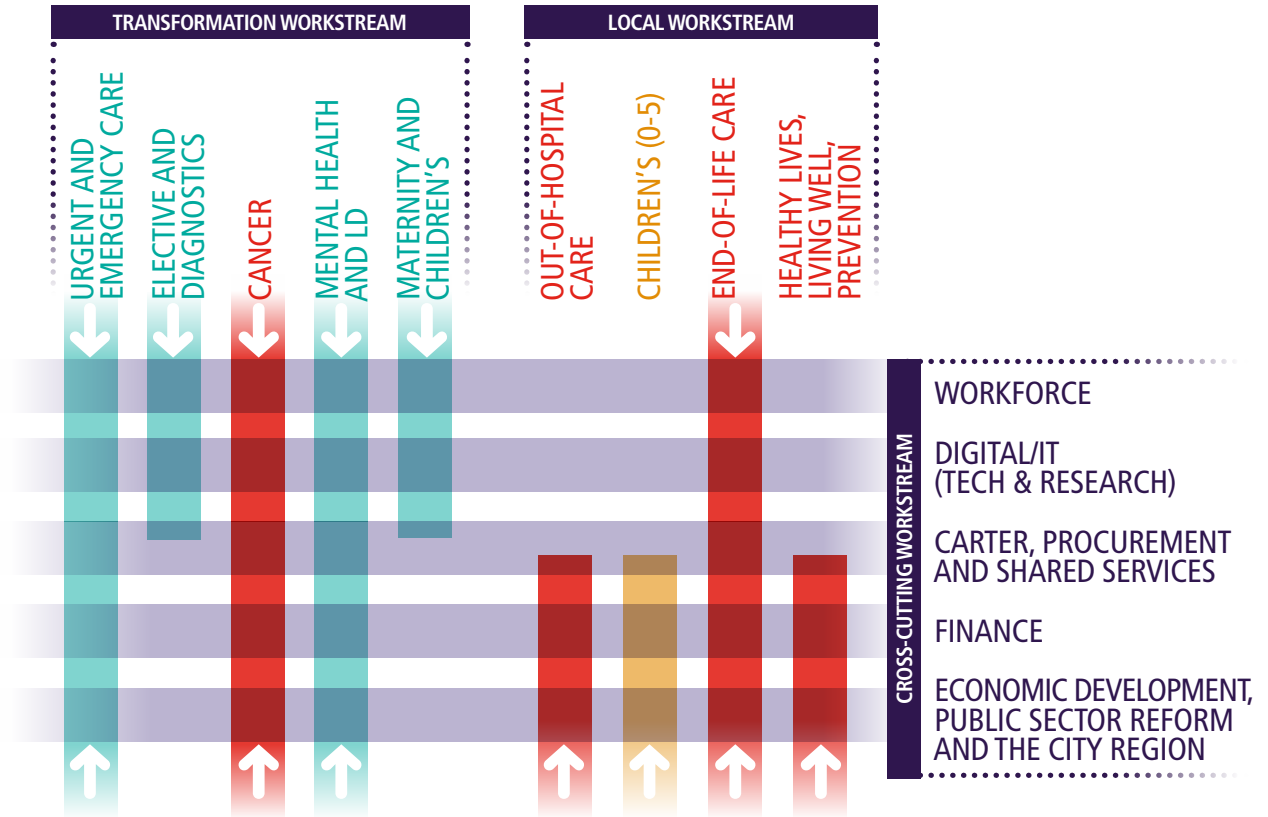
CRITICAL  
CARE STROKE  
SERVICES



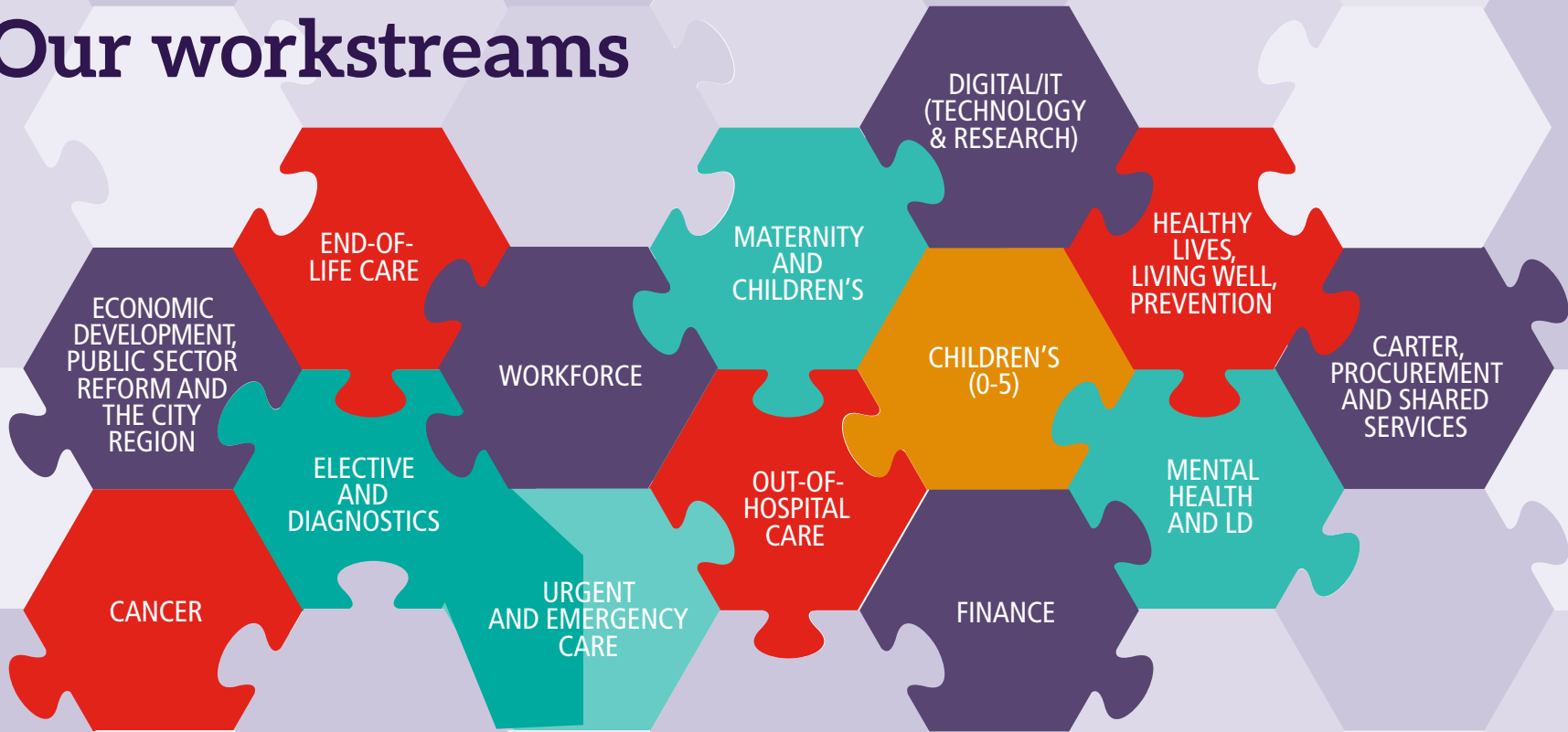
# South Yorkshire and Bassetlaw Sustainability and Transformation Plan



# South Yorkshire and Bassetlaw Sustainability and Transformation Plan



# Our workstreams







## Key dates

**APRIL 25** SYB STP SYSTEM-WIDE EVENT

---

**MAY 4** REGIONAL WORKSHOP TO SHARE THE APPROACH TO BUILDING THE OVERALL STP

---

**JUNE 10** SYB STP SYSTEM-WIDE EVENT

---

**JUNE 30** SUBMISSION

---



NHS commissioners working across South and  
Mid Yorkshire, Bassetlaw and North Derbyshire



Excellent  
healthcare  
together

